



Model DS8000

Cylinder Speed Gate

DS8000 Cylinder Speed Gate is currently the most popular and classic type of swing gate, with four major advantages:

- The cylindrical shape has a diameter of only 168mm, one unit can be a passage to save space.
- The door is made of a single piece of plexiglass from top to bottom, which makes it very safe and difficult for anyone to jump over or crawl under. The arm also adds the LED strips to make the product more dazzling.
- DS8000 infrared sensor optional, middle infrared support anti-pinch, front and back infrared sensor support induction opening and induction closing.

Features

- Two way or one way working.
- Passage width: one unit support 600-900mm, two unit double open support 900-1800mm
- Lower power consumption.
- Low noise, system runs smoothly.
- Indoor use.
- Blue, green and red LED indicator display passing status.
- Fire safety requirements, arms open automatically.
- Easy to install and maintain.
- 3 years warranty support.

Customized Service

- Appearance color can be customized based on installation environment.
- Dimensions can be customized to meet your request.
- Logo can be customized.
- Arm glass width and height optional.
- Infrared sensor optional.
- Stainless steel arm optional, can be customized.
- Waterproof outdoor can be customized.
- Picture: high resolution and 3D renderings pictures can be customized.



Logo Custom



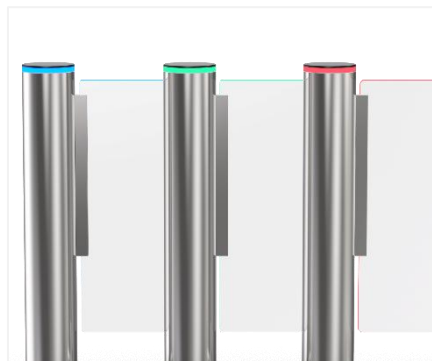
168mm Slim Body



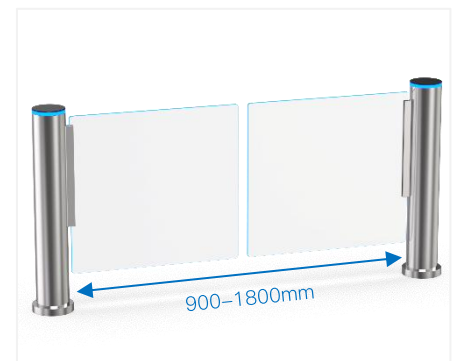
Wide Lane Optional



Infrared Sensor Optional



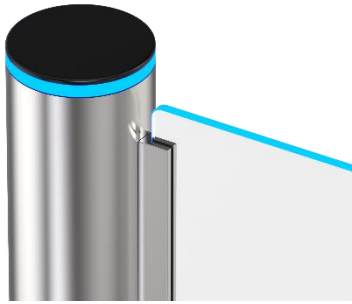
Blue, Green and Red LED Indicator



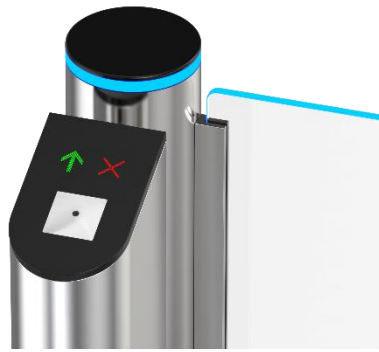
Double-Open Mode

Access Control System

Daosafe turnstile gates can be well integrated with any 3rd party access control systems



Standard Solution



Card/QR/Bar Code Solution



Biometric Solution



Remote Control



Touchless Button



Card



QR Code



Fingerprint



Face

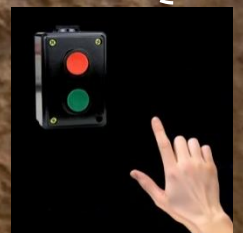


Palm Vein

One unit button solution installed at entrance



Daosafe



Specifications

Model No.	DS8000
Type	Cylinder Speed Gate
Brand	Daosafe
Framework Material	Cabinet: 304 stainless steel
Arm Material	Plexiglass 10mm (standard) Tempered glass 8mm/10mm (optional)
Top Cover Material	Plexiglass black (standard) Aluminum alloy (with infrared sensor)
Dimension	168(Φ)*1000(H)mm
Net Weight	45kg/pcs
Passage Width	<ul style="list-style-type: none"> • One unit: 600mm (standard)~900mm (Maximum) • Two unit double open: 900mm (standard)~1800mm (Maximum) • 900mm (recommended disabled lane) • Wider width increases arm size and motor load.
Arm Height	<ul style="list-style-type: none"> • 1000mm (standard), 1800mm max. (optional) • For 1800mm(H)+1200mm(W), need use hollow glass arm to reduce wind resistance.
MCBF	10 million
Power Supply	AC220V/110V, 50/60Hz
Operation Voltage	24V DC
Power Consumption	40W
Operation Temperature	-20~75°C (can be customized)
Operation Humidity	0 ~ 95% (No freeze)
IP Level	IP54(standard)/IP65 (can be customized)
Working Environment	Indoor/Outdoor (can be customized)
Flow Rate	35 people per minute
LED Indicators (Strips)	Blue color: power on, green color: entry, red color: no entry
Passing Direction	Single directional/Bi-directional
Emergency	Automatic arm open when power off
Communication	Dry contact, Relay signal, RS485
Flexibility	Integrate with any access control

Two units double open mode high glass with card solution installed at office

